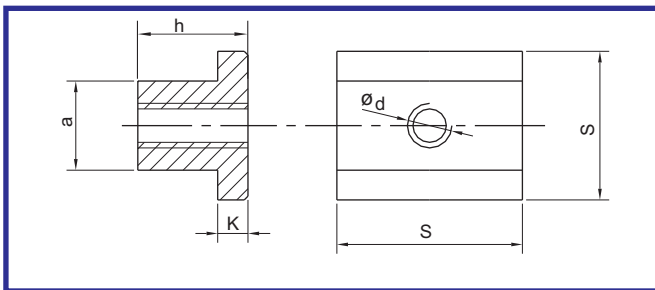


► T Nut



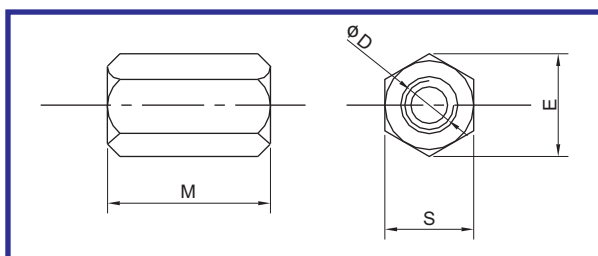
Material :- En8d
Hardness :- Core 28-30 HRC (Toughened)
Surface Treatment :- Blackodised

| Code | a | d | s | h | k |
|-------------|----|-----|----|----|----|
| T Nut M8 | 10 | M8 | 15 | 12 | 6 |
| T Nut M10 | 12 | M10 | 18 | 14 | 7 |
| T Nut M12 | 14 | M12 | 22 | 16 | 8 |
| T Nut M12 B | 16 | M12 | 25 | 18 | 9 |
| T Nut M16 | 18 | M16 | 28 | 20 | 10 |
| T Nut M16 B | 20 | M16 | 32 | 24 | 12 |
| T Nut M20 | 22 | M20 | 35 | 28 | 14 |
| T Nut M24 | 28 | M24 | 44 | 36 | 18 |



Order Type :- Code
Example :- T Nut M16

► Extension Nut



Material :- En8d
Hardness :- Core 28-30 HRC (Toughened)
Surface Treatment :- Blackodised

| Code | D | M | S | E |
|-------------------|-----|----|----|------|
| Extension Nut M8 | M8 | 24 | 13 | 15.0 |
| Extension Nut M10 | M10 | 30 | 17 | 19.6 |
| Extension Nut M12 | M12 | 36 | 19 | 21.9 |
| Extension Nut M16 | M16 | 48 | 24 | 27.7 |
| Extension Nut M20 | M20 | 60 | 30 | 34.6 |
| Extension Nut M24 | M24 | 72 | 36 | 41.6 |



Order Type :- Code
Example :- Extension Nut M20